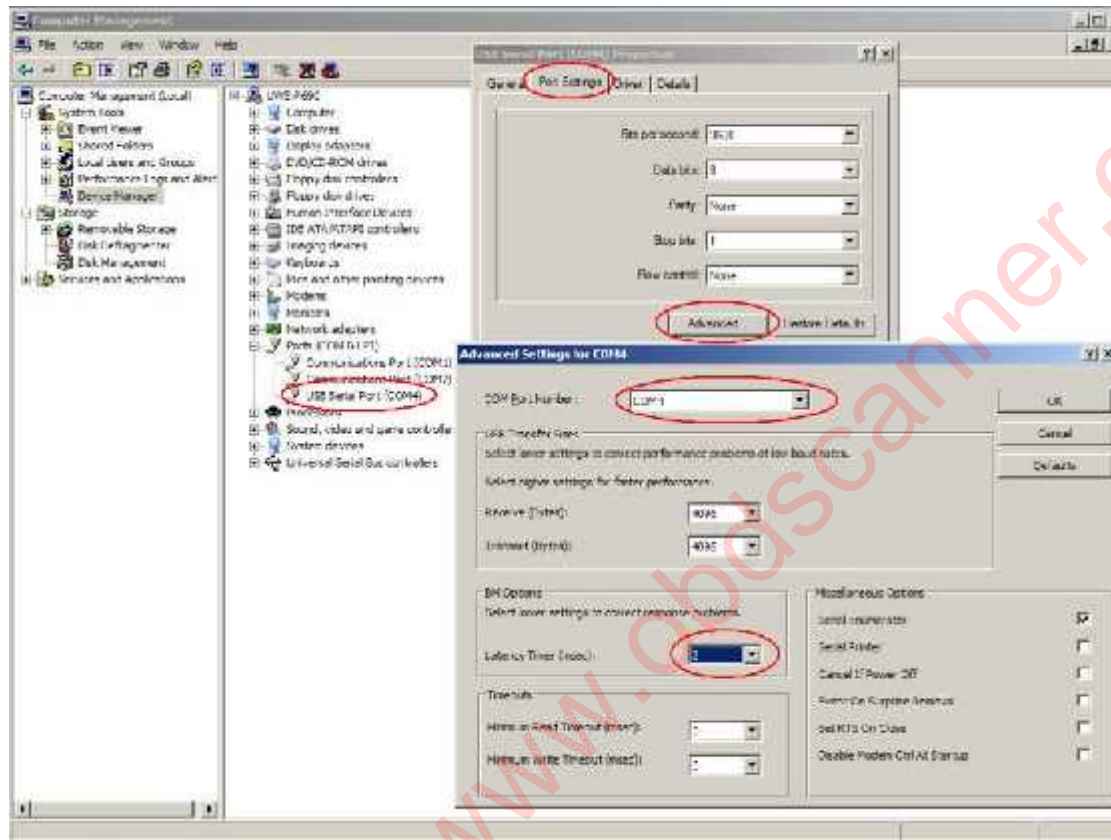


If you're getting connection errors or problems you may need to adjust the latency from device manager:

<http://www.ross-tech.com/vag-com/usb/FTDI-VCP-Options.png>



There is a FAQ and trouble shooting guide here:

http://www.ross-tech.com/vag-com/faq_1.html#1.14

It is recommended that you set it to 2, if that is no better increase the setting until you find what's best for your pc. Leave the baud rate and the other setting as they are.

Ross Tech recommend no higher than 16, I have found this to be incorrect, just keep raising the value until you get what is good for you.